



Crowther Close, London, SW6

BUTLER & STAG



Substantial five bedroom four bathroom family home tucked away in a quiet gated development off the bustling North End Road, with Fulham Broadway within easy reach.



- Five Bedroom End of Terrace House
- Within a Gated Development
- Private Patio Garden
- Moments from Vibrant North End Road
- Four Bathrooms
- Spacious Open-Plan Kitchen / Living
- Close to District Line Stations
- Available from 16th August

Newly redecorated and upgraded, this end of terrace house is arranged over three floors, offers almost 1800 Sq/Ft of living space and is immaculately presented throughout.

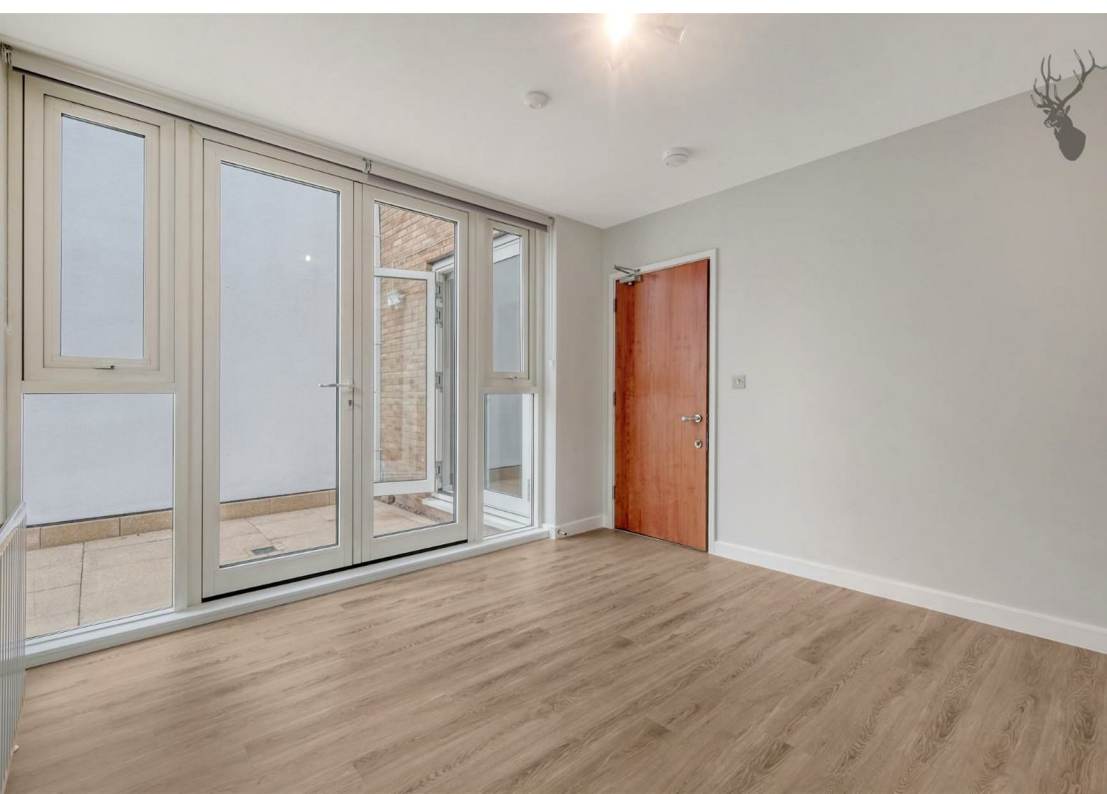
All five bedrooms are sizeable doubles, three of which benefit from en-suites. The property features a modern fitted kitchen which is open-plan to a spacious living / dining area and opens out onto a private patio garden, perfect for those summer evenings and weekends. Completing the accommodation is an additional shower room and a handy utility space on the ground floor.

The location is well-served by District Line stations (Fulham Broadway and West Brompton) and a plethora of shops, eateries and amenities on the vibrant North End Road. Central London, the river and Battersea Park are all easily accessible.

Offered unfurnished, this must-see home is available from 16th August 2025.

EPC Rating C
Council Tax Band G





Crowther Close

Approx. Gross Internal Area 167.1 sq. metres (1798.4 sq. feet)



Measurements are approximate and for illustration purposes only. While we do not doubt the accuracy and completeness, we advise you conduct a careful independent assessment of the property to determine monetary value
© @modephotouk www.modephoto.co.uk

BUTLER & STAG

☎ 020 8102 1236

🏠 508 Roman Road, Bow, London, E3 5LU

✉ bow@butlerandstag.com

IMPORTANT NOTICE - These particulars have been prepared in good faith and they are not intended to constitute part of an offer or contract. We have not performed a structural survey on this property and the services, appliances and specific fittings have not been tested. All photographs, measurements, floor plans and distances referred to are given as a guide and should not be relied upon.

www.butlerandstag.uk